

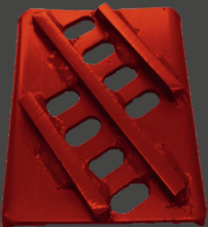
About the Flagship Concave

- All Crop Design, no need to change concaves
- Inserts are reversible and replaceable
- Boronized Max Thresh Insert at the front for longer wear
- Gentle Thresh and Max Thresh versions optional



CASE IH FLAGSHIP CONCAVE INSERTS

- Replaceable and reversible
- Boronized Max Thresh for longer wear
- Customizable



@sunnybrookwelding
**SUNNYBROOK
COMBINE
PARTS**

CASE IH PRODUCT LINE UP



info@sunnybrookwelding.com



www.sunnybrookwelding.com



780.789.3855



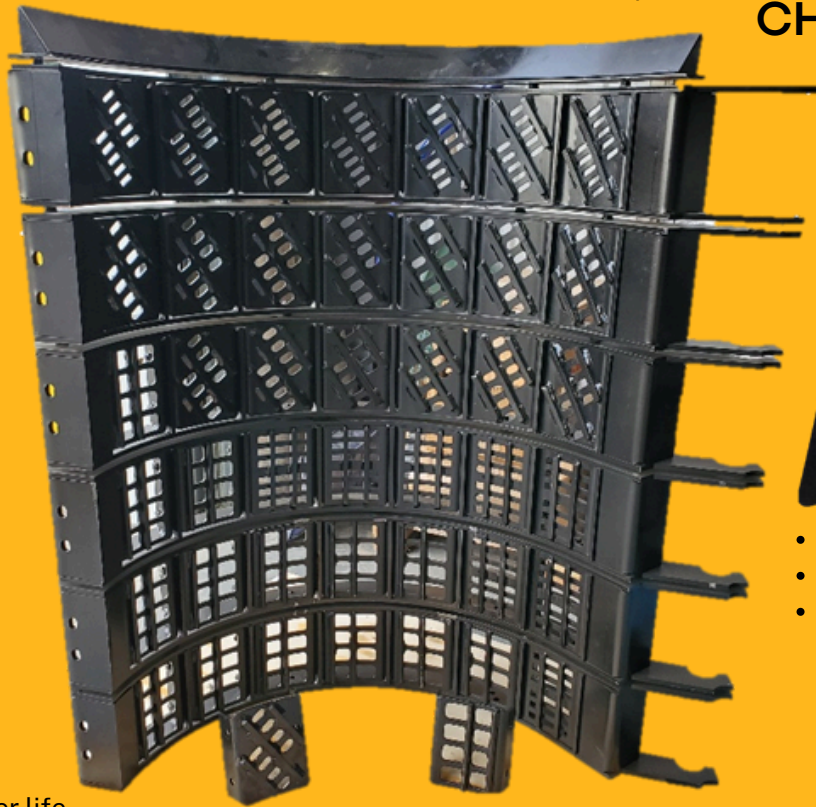
CASE IH PRODUCT LINE UP

CASE IH INSERTS



CASE IH 1680 - 7088 MODELS

- All Crop Design, no need to change concaves
- Inserts are reversible and replaceable
- Boronized Max Thresh Insert at the front for longer wear
- Gentle Thresh and Max Thresh versions optional



CHOPPER BLADES



- Stay Sharp Design
- Extended Life
- Tungsten Carbide Lasering

- Replaceable and reversible
- Boronized Max Thresh for longer life
- Customizable

**SUNNYBROOK
COMBINE
PARTS**

**BETTER THRESHING, BETTER SEPARATION, BETTER SAMPLES
- BE BETTER WITH SUNNYBROOK COMBINE PARTS**