

# HOW TO INSTALL

# GLEANER

# AC CONVERSION

# KIT

The Gleaner AC Conversion Kits modify the CDF "R" and "S" Series rotors to more aggressively move material through the separator, resulting in greater output and less rotor component wear in some crops and conditions. For complete details see the information below.

"R" Series Rotor Kit Part No. SBA0833 consists of:

- 9 Sweeps
- 1 Channel 37" (Cut into 3 equal lengths of 12.33")
- 9 Mod. Impellers

"S" Series Rotor Kit Part No. SBA0834 consists of:

- 9 Sweeps
- 1 Channel 37" (Cut into 3 equal lengths of 12.33")
- 9 Mod. Impellers

"Single Channels Sold Separately Part No. SBA0830:

- 1 Channel 37" (Original OEM length)

## Since 2015

"S" Series Rotor Kit Part No. SBA0834L - for Gleaner S-Series that have no channels, consists of:

- 9 Sweeps
- 3 Channels (Each channel is 49.5" long)
- 9 Mod. Impellers

Important note: Make sure to double check your rotor as not all models after 2015 require the above parts.



Sweeps

Channel

Impellers

**NEED ASSISTANCE**

780.789.3855  
info@sunnybrookwelding.com

# HOW TO INSTALL

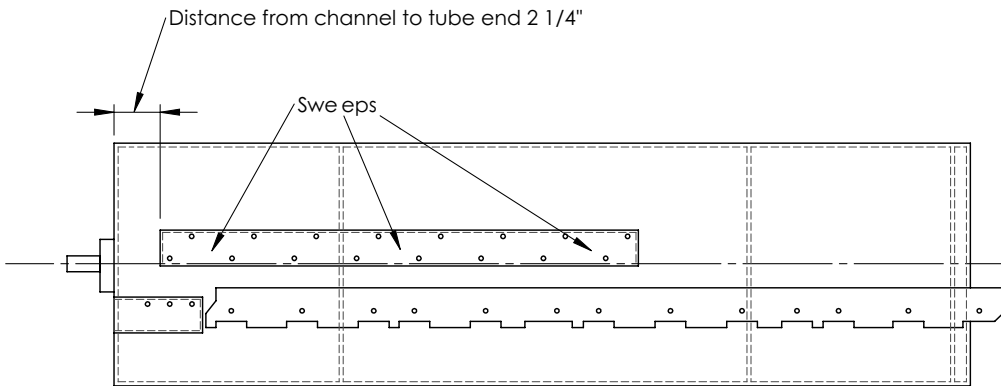


# GLEANER

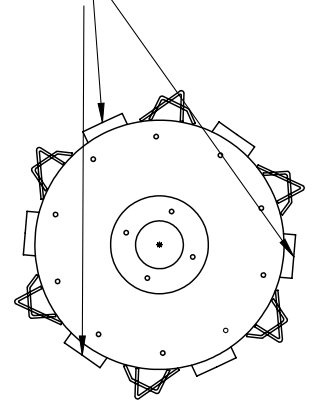
# AC CONVERSION KIT

- Parts Numbers SBA0834L fits on rotors that have no channels 49 1/2" long.
- Mount/weld them 2 1/4" from end of rotor pipe at the stub shaft end.

- Endview shows position.



Kit installed in 3 positions



We recommend a sweep be installed in the last position closest to the discharge. You should have 3 sweeps on each channel. There will be room for 2 mod-impeller between the sweeps.

**NEED ASSISTANCE**

780.789.3855  
info@sunnybrookwelding.com